

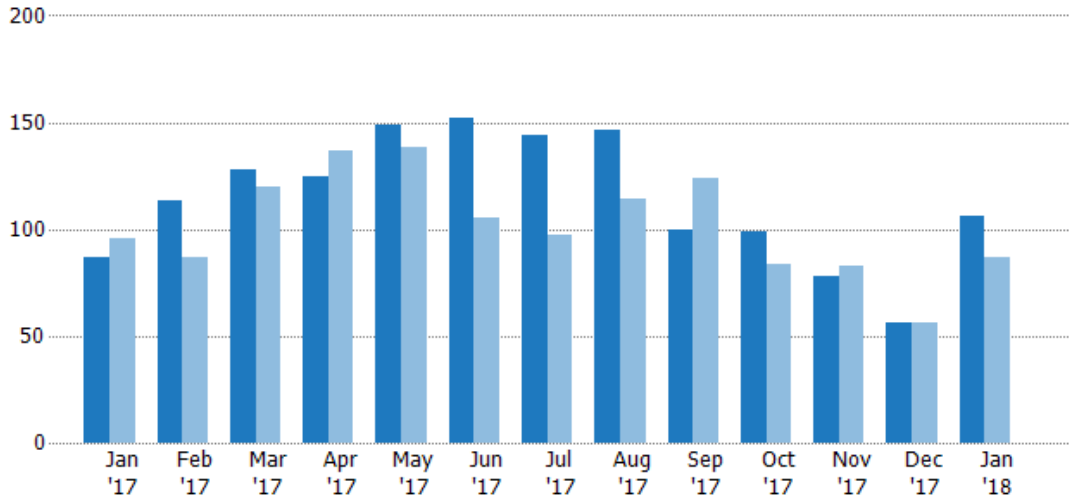
New Listings

The number of new single-family, condominium and townhome listings that were added each month.

Filters Used

County: 6 Selected

Month/Year	Count	% Chg.
Jan '18	106	21.8%
Jan '17	87	-9.4%
Jan '16	96	-22.9%



Current Year	87	113	128	125	149	152	144	146	100	99	78	56	106
Prior Year	96	87	120	137	138	105	97	114	124	84	83	56	87
Percent Change from Prior Year	-9%	30%	7%	-9%	8%	45%	48%	28%	-19%	18%	-6%	0%	22%

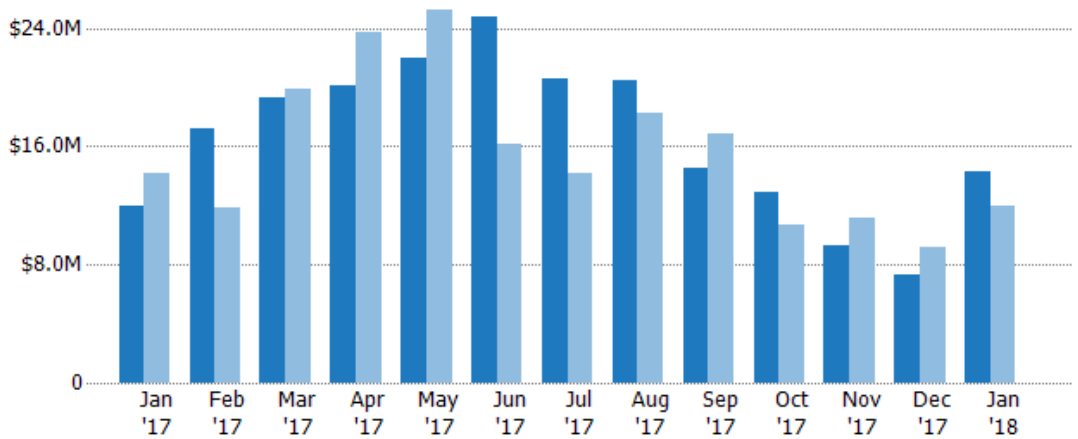
New Listing Volume

The sum of the listing price of single-family, condominium and townhome listings that were added each month.

Filters Used

County: 6 Selected

Month/Year	Volume	% Chg.
Jan '18	\$14.3M	20.4%
Jan '17	\$11.9M	-16.2%
Jan '16	\$14.2M	-16.2%



Current Year	\$11.9M	\$17.2M	\$19.3M	\$20.1M	\$21.9M	\$24.8M	\$20.5M	\$20.5M	\$14.6M	\$12.9M	\$9.25M	\$7.29M	\$14.3M
Prior Year	\$14.2M	\$11.9M	\$19.9M	\$23.7M	\$25.3M	\$16.2M	\$14.2M	\$18.2M	\$16.9M	\$10.7M	\$11.1M	\$9.14M	\$11.9M
Percent Change from Prior Year	-16%	45%	-3%	-15%	-13%	54%	45%	12%	-14%	21%	-17%	-20%	20%

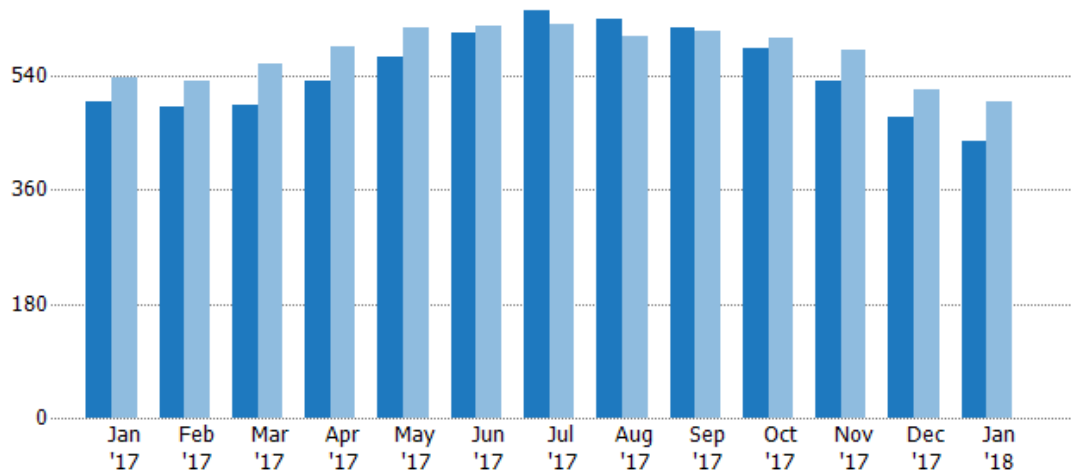
Active Listings

The number of active single-family, condominium and townhome listings at the end of each month.

Filters Used

County: 6 Selected

Month/Year	Count	% Chg.
Jan '18	438	-12.4%
Jan '17	500	-6.9%
Jan '16	537	-14.2%



	Jan '17	Feb '17	Mar '17	Apr '17	May '17	Jun '17	Jul '17	Aug '17	Sep '17	Oct '17	Nov '17	Dec '17	Jan '18
Current Year	500	490	494	531	569	608	643	630	616	584	533	475	438
Prior Year	537	532	558	586	615	618	620	602	611	600	581	519	500
Percent Change from Prior Year	-7%	-8%	-11%	-9%	-7%	-2%	4%	5%	1%	-3%	-8%	-8%	-12%

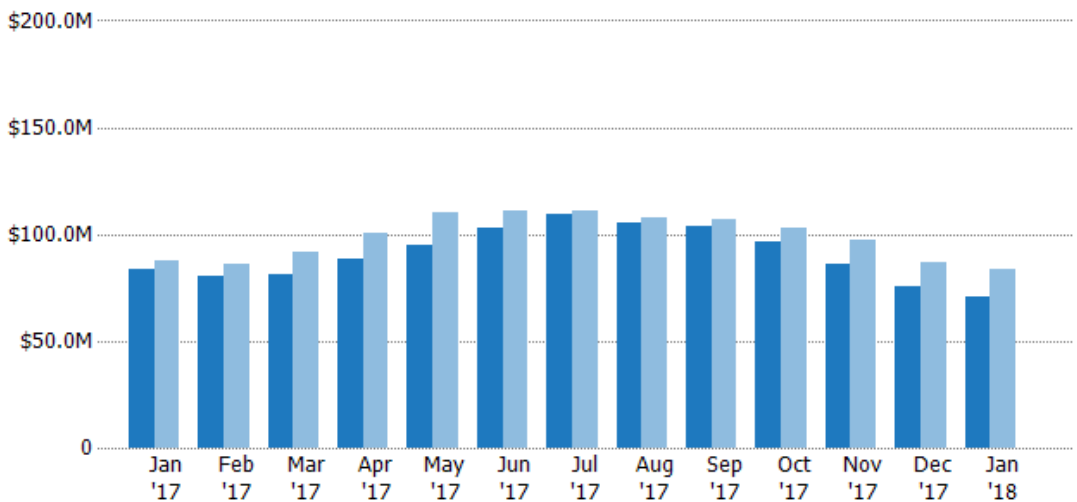
Active Listing Volume

The sum of the listing price of active single-family, condominium and townhome listings at the end of each month.

Filters Used

County: 6 Selected

Month/Year	Volume	% Chg.
Jan '18	\$71M	-15%
Jan '17	\$83.5M	-4.4%
Jan '16	\$87.4M	-13.6%



	Jan '17	Feb '17	Mar '17	Apr '17	May '17	Jun '17	Jul '17	Aug '17	Sep '17	Oct '17	Nov '17	Dec '17	Jan '18
Current Year	\$83.5M	\$80.4M	\$80.8M	\$88.3M	\$94.5M	\$103M	\$109M	\$105M	\$104M	\$96.6M	\$86M	\$75.9M	\$71M
Prior Year	\$87.4M	\$85.9M	\$91.7M	\$100M	\$110M	\$111M	\$111M	\$108M	\$107M	\$103M	\$97.2M	\$87.1M	\$83.5M
Percent Change from Prior Year	-4%	-7%	-12%	-12%	-14%	-7%	-1%	-2%	-3%	-6%	-11%	-13%	-15%

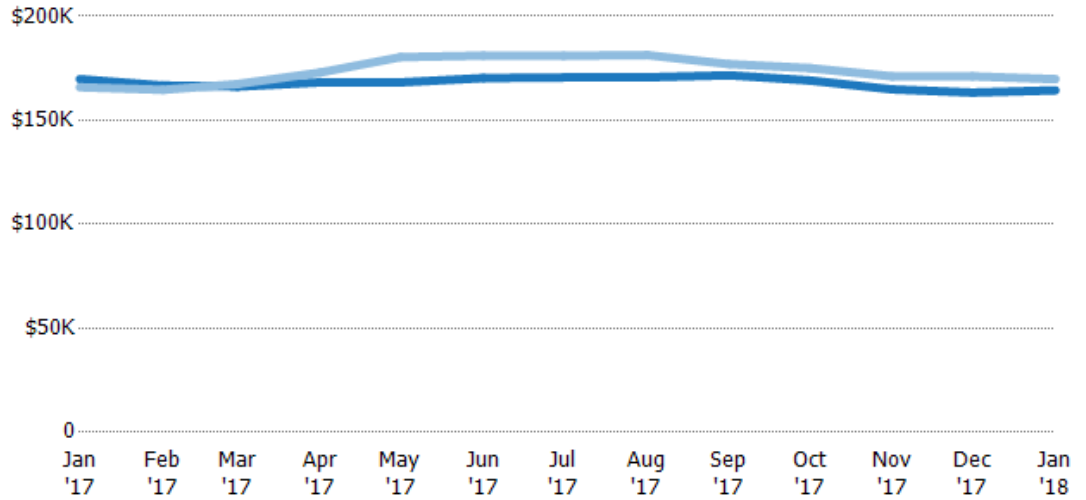
Average Listing Price

The average listing price of active single-family, condominium and townhome listings at the end of each month.

Filters Used

County: 6 Selected

Month/Year	Price	% Chg.
Jan '18	\$164K	-3.2%
Jan '17	\$170K	2.4%
Jan '16	\$166K	-1%



Current Year	\$170K	\$167K	\$166K	\$168K	\$168K	\$170K	\$171K	\$171K	\$172K	\$169K	\$165K	\$163K	\$164K
Prior Year	\$166K	\$165K	\$167K	\$173K	\$180K	\$181K	\$181K	\$181K	\$177K	\$175K	\$171K	\$171K	\$170K
Percent Change from Prior Year	2%	1%	-1%	-3%	-7%	-6%	-6%	-6%	-3%	-3%	-4%	-5%	-3%

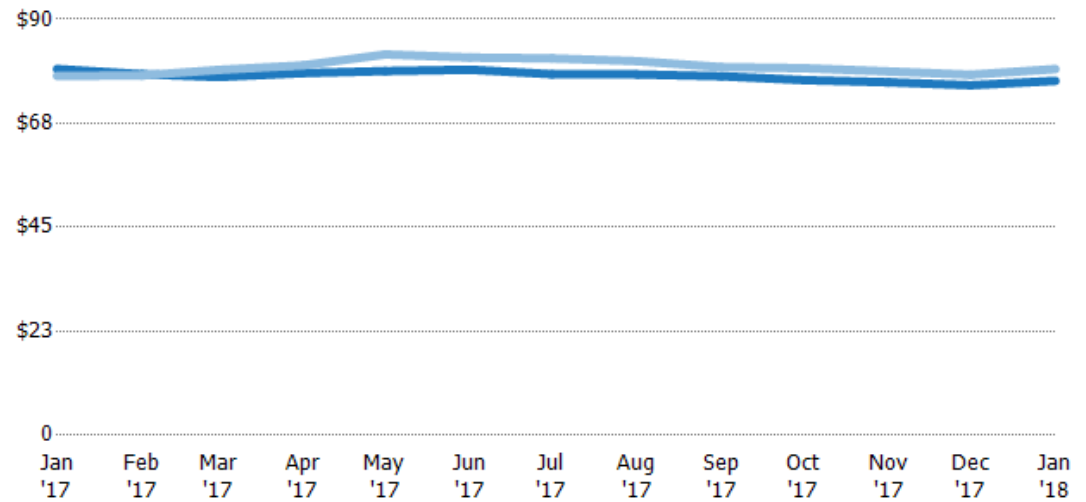
Average Listing Price per Sq Ft

The average of listing prices divided by the living area of homes on market at the end of each month.

Filters Used

County: 6 Selected

Month/Year	Price/sq ft	% Chg.
Jan '18	\$76.7	-3.2%
Jan '17	\$79.2	1.9%
Jan '16	\$77.8	1%

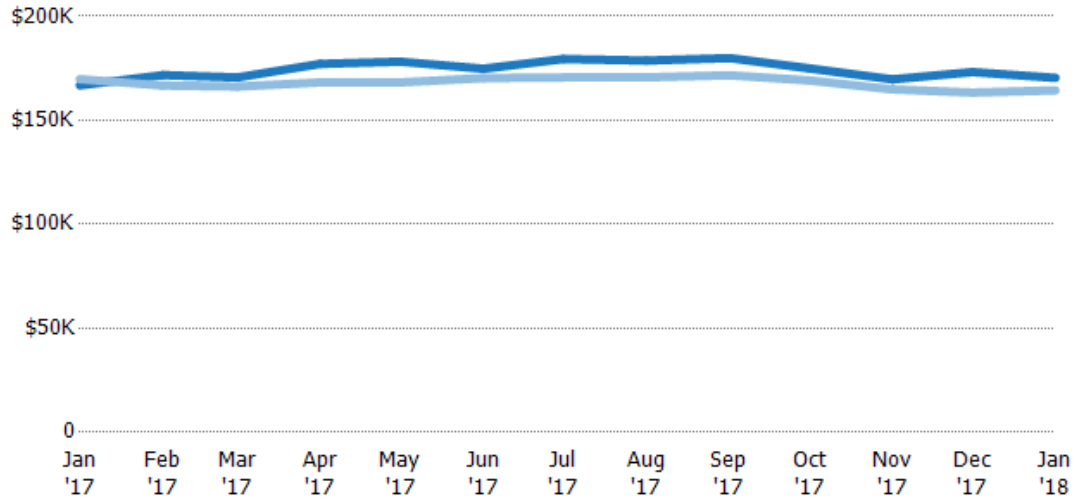


Current Year	\$79.2	\$78.1	\$77.5	\$78.3	\$78.8	\$79.1	\$78.1	\$78.1	\$77.7	\$76.8	\$76.4	\$75.7	\$76.7
Prior Year	\$77.8	\$77.8	\$79	\$80	\$82.4	\$81.7	\$81.5	\$80.9	\$79.7	\$79.4	\$78.7	\$78	\$79.2
Percent Change from Prior Year	2%	0%	-2%	-2%	-4%	-3%	-4%	-4%	-2%	-3%	-3%	-3%	-3%

Average Listing Price vs Average Est Value

The average listing price as a percentage of the average AVM or RVM® valuation estimate for active listings each month.

Filters Used
County: 6 Selected

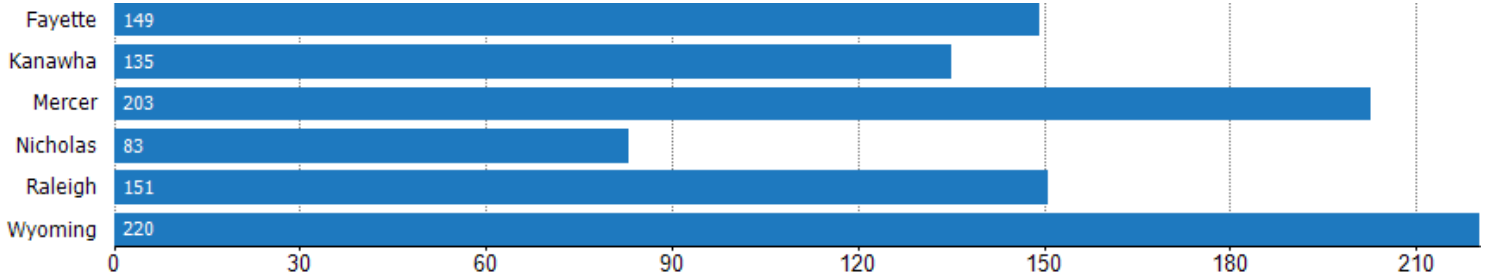


	Jan '17	Feb '17	Mar '17	Apr '17	May '17	Jun '17	Jul '17	Aug '17	Sep '17	Oct '17	Nov '17	Dec '17	Jan '18
Avg Est Value	\$167K	\$172K	\$171K	\$177K	\$178K	\$175K	\$179K	\$179K	\$180K	\$175K	\$170K	\$173K	\$170K
Avg Listing Price	\$170K	\$167K	\$166K	\$168K	\$168K	\$170K	\$171K	\$171K	\$172K	\$169K	\$165K	\$163K	\$164K
Avg Listing Price as a % of Avg Est Value	102%	97%	97%	95%	94%	97%	95%	95%	95%	97%	97%	94%	96%

Average Days in RPR (By County)

The average number of days between when residential properties are first displayed as active listings in RPR and when accepted offers have been noted in RPR by county.

Filters Used: County: 6 Selected



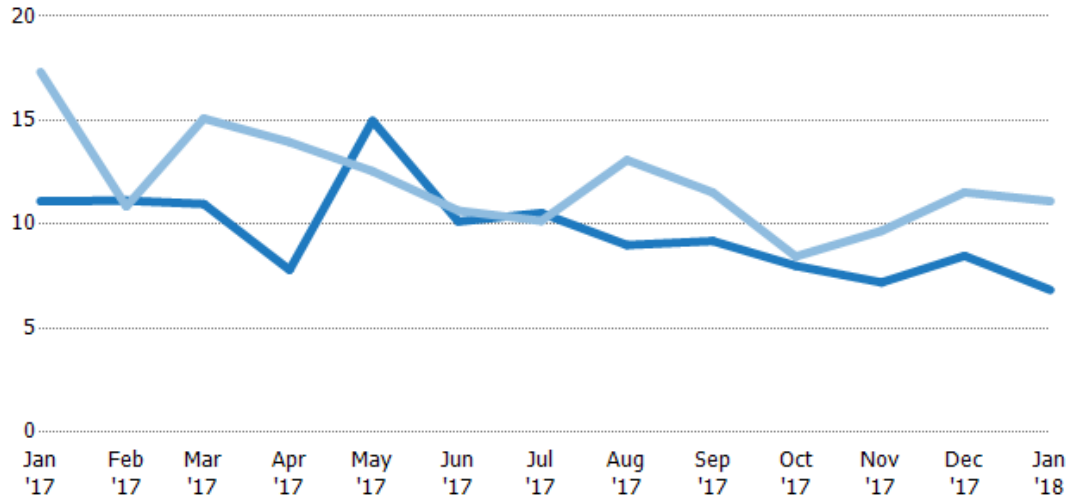
Months of Inventory

The number of months it would take to exhaust active listings at the current sales rate.

Filters Used

County: 6 Selected

Month/Year	Months	% Chg.
Jan '18	6.84	-38.4%
Jan '17	11.1	-35.9%
Jan '16	17.3	-43.4%



Current Year	11.1	11.1	11	7.81	15	10.1	10.5	9	9.19	8	7.2	8.48	6.84
Prior Year	17.3	10.9	15.1	14	12.6	10.7	10.2	13.1	11.5	8.45	9.68	11.5	11.1
Percent Change from Prior Year	-36%	3%	-27%	-44%	19%	-5%	4%	-31%	-20%	-5%	-26%	-26%	-38%

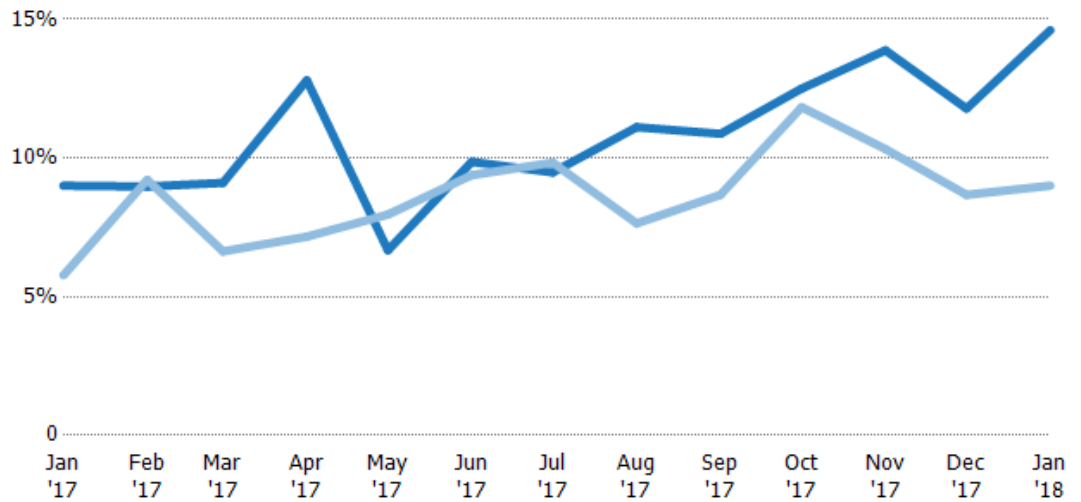
Absorption Rate

The percentage of inventory sold per month.

Filters Used

County: 6 Selected

Month/Year	Rate	Chg.
Jan '18	15%	-5.6%
Jan '17	9%	-3.2%
Jan '16	6%	76.6%

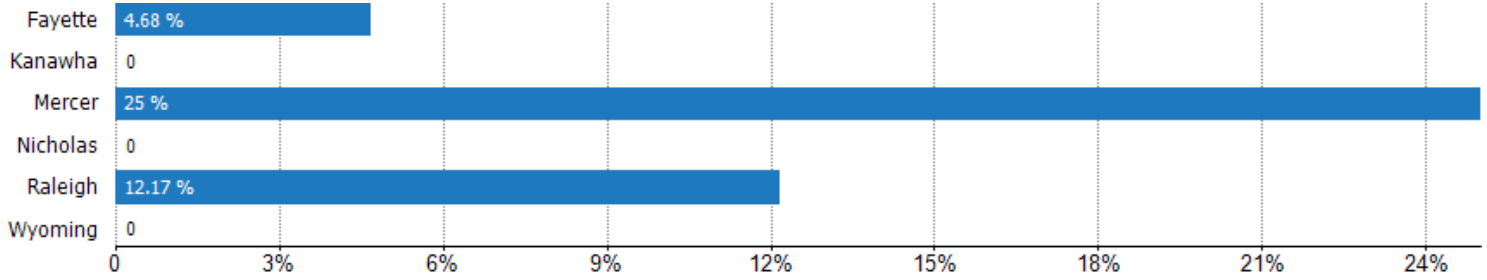


Current Year	9%	9%	9%	13%	7%	10%	9%	11%	11%	13%	14%	12%	15%
Prior Year	6%	9%	7%	7%	8%	9%	10%	8%	9%	12%	10%	9%	9%
Change from Prior Year	-3%	0%	-2%	-6%	1%	0%	0%	-3%	-2%	-1%	-4%	-3%	-6%

Absorption Rate (By County)

The percentage of the inventory sold during the last month by county.

Filters Used: County: 6 Selected



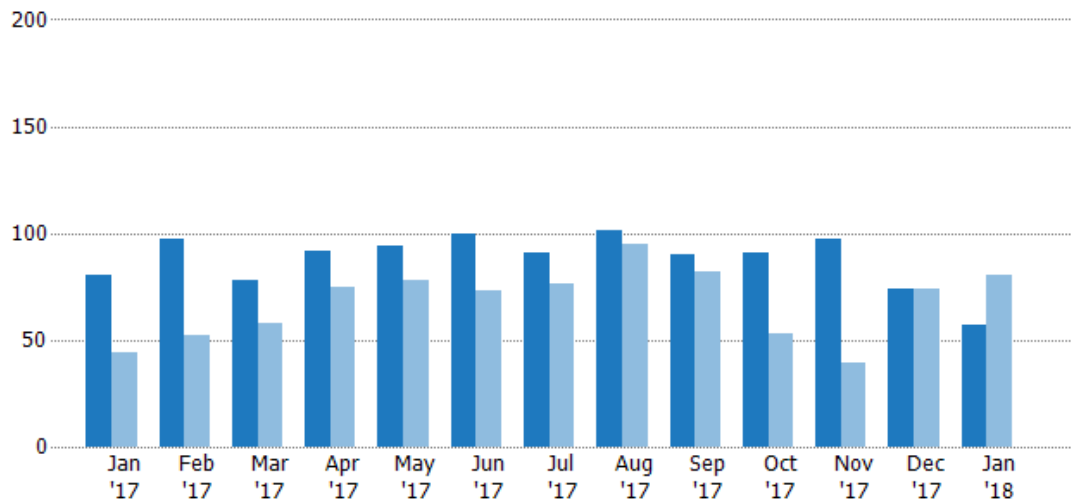
Pending Sales

The number of single-family, condominium and townhome properties with accepted offers that were available at the end each month.

Filters Used

County: 6 Selected

Month/Year	Count	% Chg.
Jan '18	57	-28.8%
Jan '17	80	81.8%
Jan '16	44	50%



Current Year	80	97	78	92	94	100	91	101	90	91	97	74	57
Prior Year	44	52	58	75	78	73	76	95	82	53	39	74	80
Percent Change from Prior Year	82%	87%	34%	23%	21%	37%	20%	6%	10%	72%	149%	0%	-29%

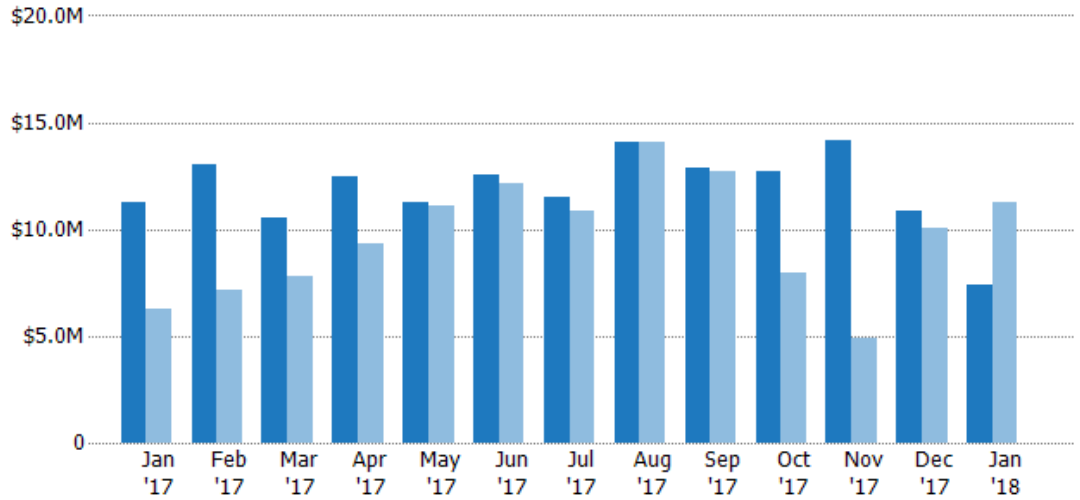
Pending Sales Volume

The sum of the sales price of single-family, condominium and townhome properties with accepted offers that were available at the end of each month.

Filters Used

County: 6 Selected

Month/Year	Volume	% Chg.
Jan '18	\$7.36M	-34.4%
Jan '17	\$11.2M	78.6%
Jan '16	\$6.28M	28.6%



Current Year	\$11.2M	\$13.1M	\$10.5M	\$12.5M	\$11.2M	\$12.6M	\$11.5M	\$14.1M	\$12.9M	\$12.7M	\$14.1M	\$10.8M	\$7.36M
Prior Year	\$6.28M	\$7.14M	\$7.79M	\$9.29M	\$11.1M	\$12.1M	\$10.9M	\$14.1M	\$12.7M	\$7.99M	\$4.92M	\$10M	\$11.2M
Percent Change from Prior Year	79%	83%	35%	34%	1%	4%	6%	0%	1%	59%	187%	8%	-34%

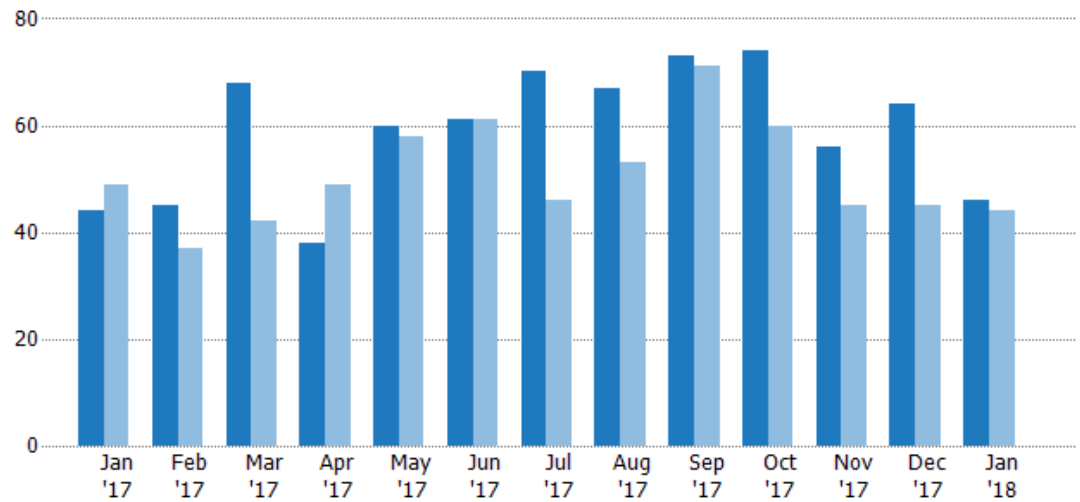
Closed Sales

The total number of single-family, condominium and townhome properties sold each month.

Filters Used

County: 6 Selected

Month/Year	Count	% Chg.
Jan '18	46	4.5%
Jan '17	44	-10.2%
Jan '16	49	-22.4%



Current Year	44	45	68	38	60	61	70	67	73	74	56	64	46
Prior Year	49	37	42	49	58	61	46	53	71	60	45	45	44
Percent Change from Prior Year	-10%	22%	62%	-22%	3%	0%	52%	26%	3%	23%	24%	42%	5%

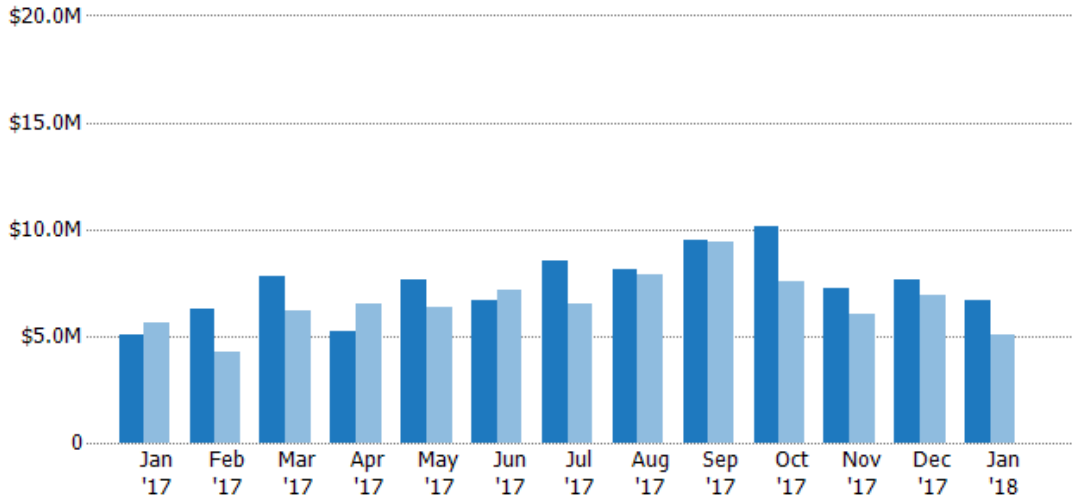
Closed Sales Volume

The sum of the sales price of single-family, condominium and townhome properties sold each month.

Filters Used

County: 6 Selected

Month/Year	Volume	% Chg.
Jan '18	\$6.66M	31.6%
Jan '17	\$5.06M	-9.5%
Jan '16	\$5.6M	-10.2%



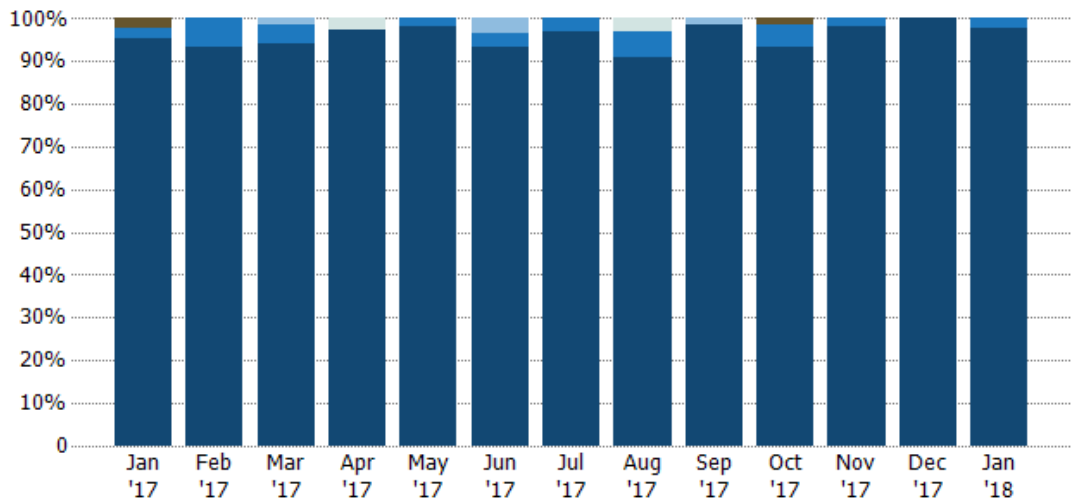
Current Year	\$5.06M	\$6.24M	\$7.81M	\$5.25M	\$7.67M	\$6.71M	\$8.5M	\$8.14M	\$9.5M	\$10.1M	\$7.26M	\$7.6M	\$6.66M
Prior Year	\$5.6M	\$4.29M	\$6.16M	\$6.51M	\$6.31M	\$7.15M	\$6.54M	\$7.9M	\$9.43M	\$7.53M	\$6.04M	\$6.87M	\$5.06M
Percent Change from Prior Year	-10%	45%	27%	-19%	22%	-6%	30%	3%	1%	35%	20%	11%	32%

Closed Sales by Property Type

The percentage of single-family, condominium and townhome properties sold each month by property type.

Filters Used

County: 6 Selected

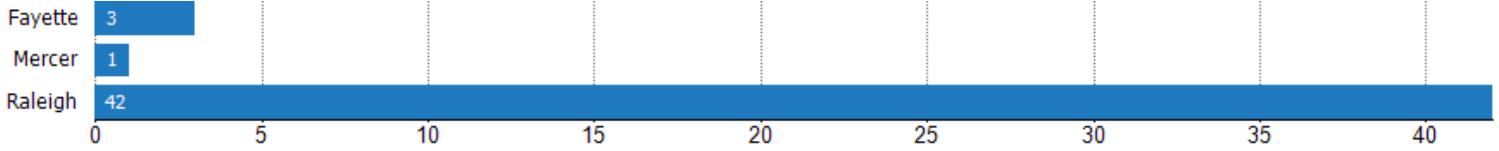


Other	2%	-	-	-	-	-	-	-	-	1%	-	-	-
Farm/Ranch	-	-	-	3%	-	-	-	3%	-	-	-	-	-
Mobile/Manufactured	-	-	1%	-	-	3%	-	-	1%	-	-	-	-
Condo/Townhouse	2%	7%	4%	-	2%	3%	3%	6%	-	5%	2%	-	2%
Single Family Residence	95%	93%	94%	97%	98%	93%	97%	91%	99%	93%	98%	100%	98%

Closed Sales (By County)

The total number of single-family, condominium and townhome properties sold during the last month by county.

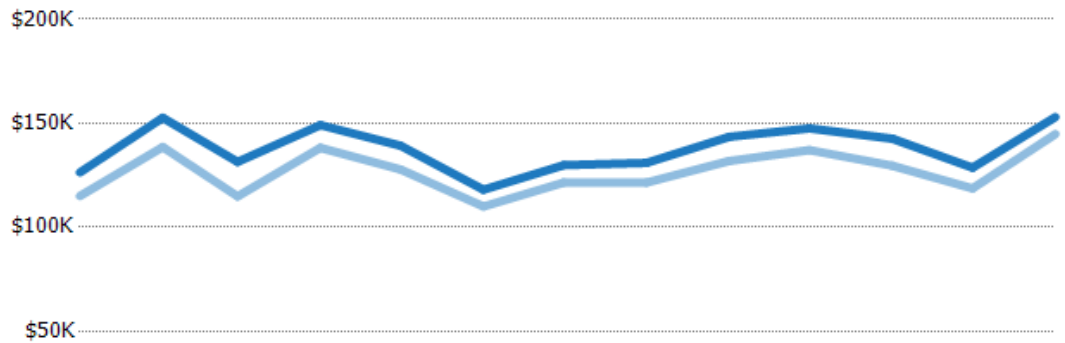
Filters Used: County: 6 Selected



Average Sales Price vs Average Listing Price

The average sales price as a percentage of the average listing price for properties sold each month.

Filters Used
County: 6 Selected

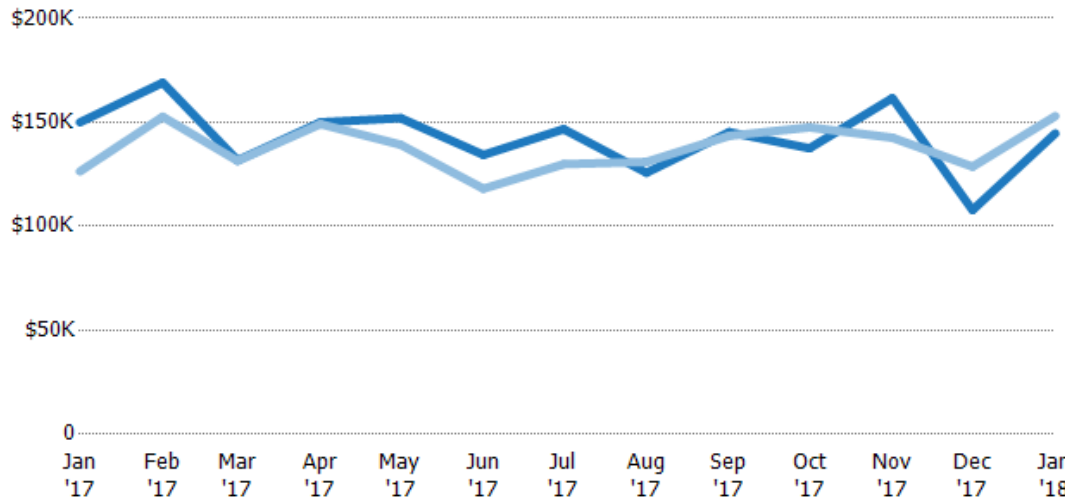


	Jan '17	Feb '17	Mar '17	Apr '17	May '17	Jun '17	Jul '17	Aug '17	Sep '17	Oct '17	Nov '17	Dec '17	Jan '18
Avg List Price	\$126K	\$153K	\$131K	\$149K	\$139K	\$118K	\$130K	\$131K	\$143K	\$148K	\$143K	\$129K	\$153K
Avg Sales Price	\$115K	\$139K	\$115K	\$138K	\$128K	\$110K	\$121K	\$121K	\$132K	\$137K	\$130K	\$119K	\$145K
Avg Sales Price as a % of Avg List Price	91%	91%	87%	93%	92%	93%	94%	93%	92%	93%	91%	92%	95%

Average Sales Price vs Average Est Value

The average sales price as a percentage of the average AVM or RVM® valuation estimate for properties sold each month.

Filters Used
County: 6 Selected



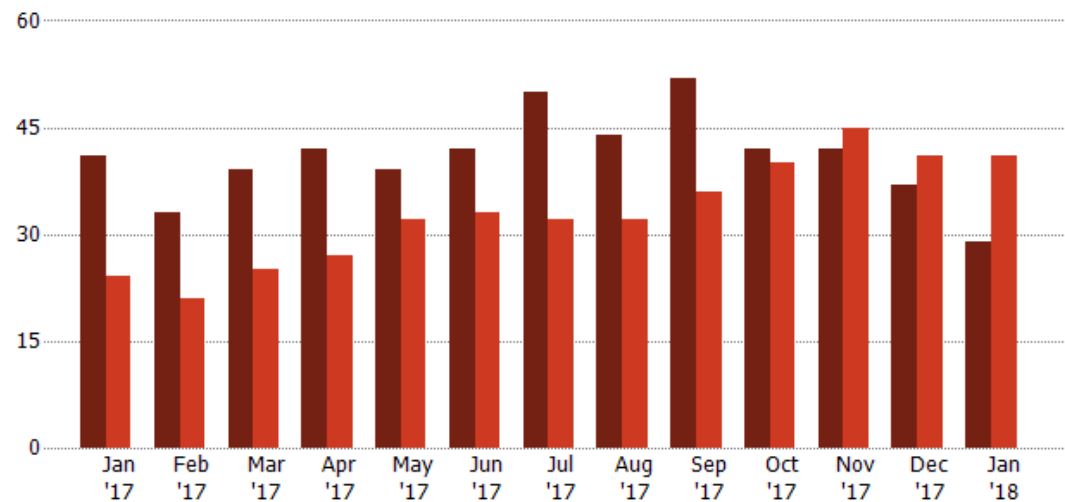
	Jan '17	Feb '17	Mar '17	Apr '17	May '17	Jun '17	Jul '17	Aug '17	Sep '17	Oct '17	Nov '17	Dec '17	Jan '18
Avg Est Value	\$150K	\$169K	\$132K	\$150K	\$152K	\$134K	\$147K	\$126K	\$145K	\$137K	\$162K	\$108K	\$145K
Avg Sales Price	\$126K	\$153K	\$131K	\$149K	\$139K	\$118K	\$130K	\$131K	\$143K	\$148K	\$143K	\$129K	\$153K
Avg Sales Price as a % of Avg Est Value	84%	90%	100%	99%	92%	88%	89%	104%	99%	107%	88%	119%	106%

Distressed Listings

The number of distressed single-family, condominium and townhome properties that were for sale at the end of each month.

Filters Used
County: 6 Selected

Month/Year	Count	% Chg.
Jan '18	29	-29.3%
Jan '17	41	70.8%
Jan '16	24	-41.7%

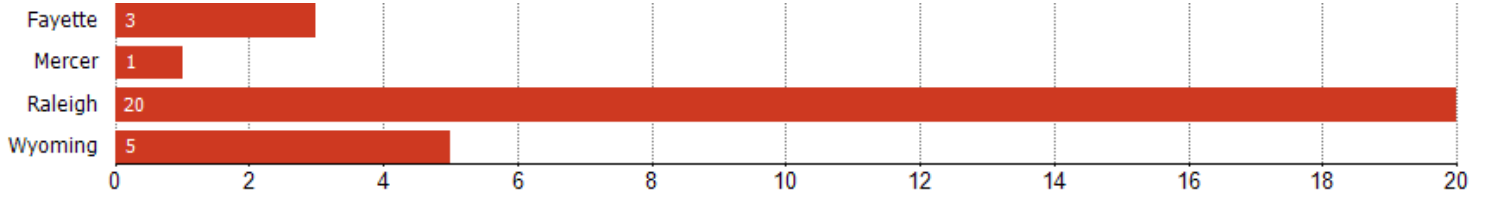


	Jan '17	Feb '17	Mar '17	Apr '17	May '17	Jun '17	Jul '17	Aug '17	Sep '17	Oct '17	Nov '17	Dec '17	Jan '18
Current Year	41	33	39	42	39	42	50	44	52	42	42	37	29
Prior Year	24	21	25	27	32	33	32	32	36	40	45	41	41
Percent Change from Prior Year	71%	57%	56%	56%	22%	27%	56%	38%	44%	5%	-7%	-10%	-29%

Distressed Listings (By County)

The number of distressed single-family, condominium and townhome properties that were for sale at the end of the last month by county.

Filters Used: County: 6 Selected



Appendix

The metrics that are calculated by RPR® may show the same general trends as those published by other sources (i.e. MLS, Associations or vendors), but because of our processes and parcel-centric approach, some variation may occur. Data sources include MLS's, where licensed, and public records for more in-depth metrics on distressed properties.

Report Details

Report Name: Monthly Market Data Report

Run Date: 02/07/2018

Scheduled: Yes

Report Date Range: From 1/2017 To: 1/2018

Information Included

- | | |
|--|--|
| <input checked="" type="checkbox"/> Include Cover Sheet | <input checked="" type="checkbox"/> Averages |
| <input type="checkbox"/> Include Key Metric Summary | <input checked="" type="checkbox"/> Include Appendix |
| <input checked="" type="checkbox"/> Include Metrics By: County | <input type="checkbox"/> Medians |

MLS Filter

MLS: All

Listing Filters

Property Types: All

Sales Types: All

Price Range: None

Location Filters

State: All

County:	Fayette County, West Virginia	Kanawha County, West Virginia	Mercer County, West Virginia
	Nicholas County, West Virginia	Raleigh County, West Virginia	Wyoming County, West Virginia

ZIP Code: All

Listing Activity Charts

- New Listings
- Active Listings
- Average Listing Price
- Average Listing Price per Sq Ft
- Average Listing Price vs Est Value
- Median Days in RPR
- Months of Inventory
- Absorption Rate

Sales Activity Charts

- Active/Pending/Sold
- New Pending Sales
- Pending Sales
- Closed Sales
- Average Sales Price
- Average Sales Price per Sq Ft
- Average Sales Price vs Listing Price
- Average Sales Price vs Est Value

Distressed Charts

- Distressed Listings
- Distressed Sales

Data Tables Using 1/2018 data

- Listing Activity by ZIP
- Listing Activity by Metro Area
- Sales Activity by ZIP
- Sales Activity by Metro Area